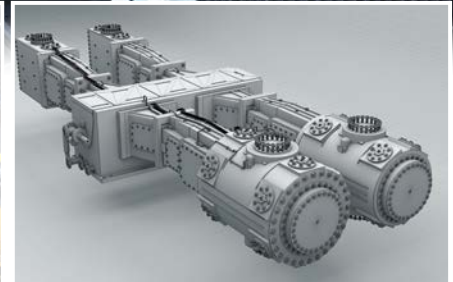




**GULF WESTERN OIL**  
**THE TOUGH AUSTRALIAN**

# INDUSTRIAL- OFF HIGHWAY



**2017-2018**

FREE TOLL: 1800 248 919 WEB: [WWW.GULFWESTERN.COM.AU](http://WWW.GULFWESTERN.COM.AU)

# CONTENTS

**1**

## ABOUT GULF WESTERN OIL

COMPANY INFORMATION  
COMPANY OVERVIEW

**2**

## RESEARCH & DEVELOPMENT

OVERVIEW  
IN-HOUSE LABORATORY

**3**

## MANUFACTURING

OVERVIEW  
CUSTOM BLENDING

**4**

## HEAVY DUTY DIESEL ENGINE OILS & STATIONARY ENGINES

OVERVIEW  
MOBILE EQUIPMENT

**6**

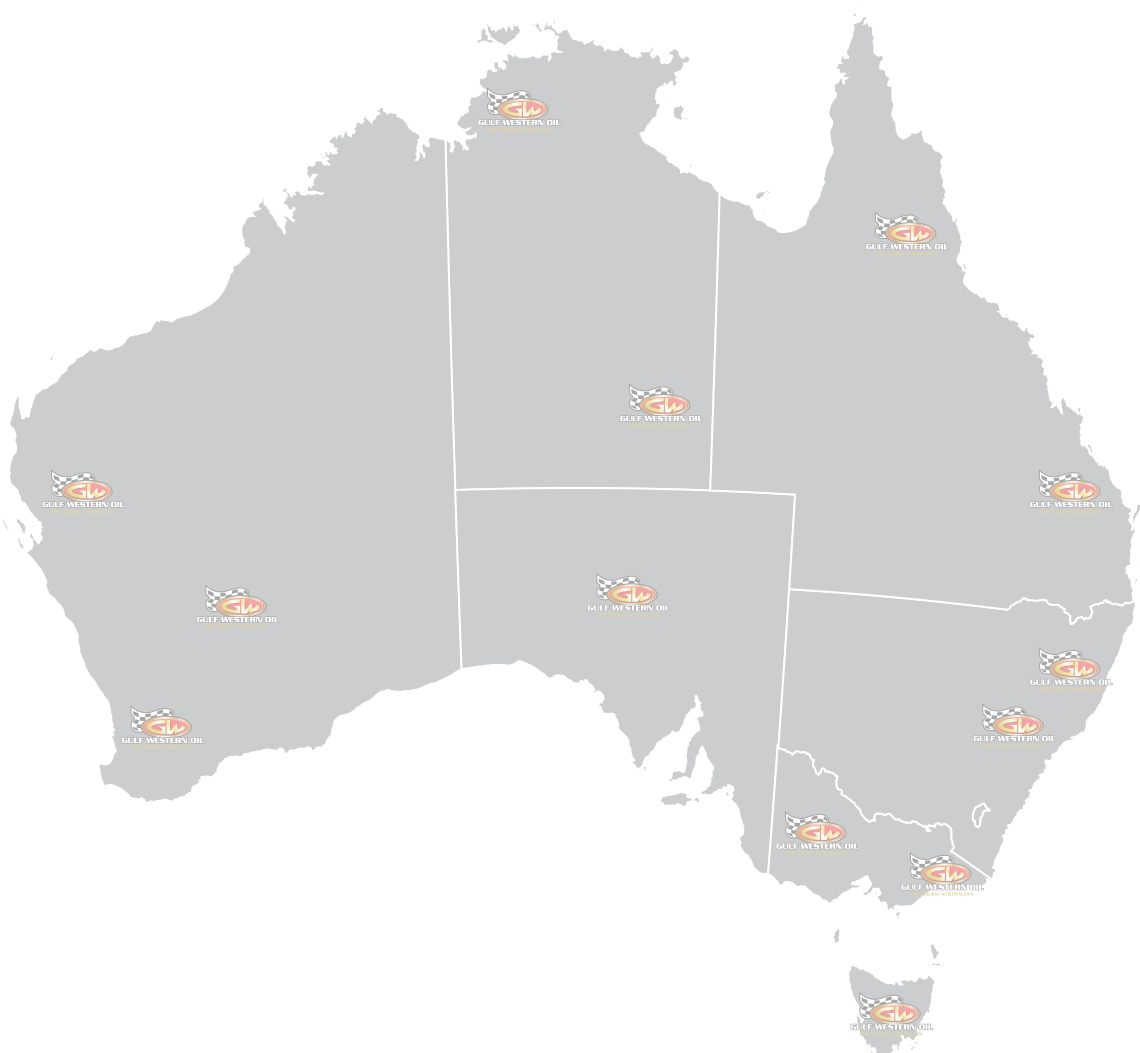
## HEAVY DUTY GAS ENGINE OILS & STATIONARY ENGINES

OVERVIEW  
MOBILE EQUIPMENT

**8**

## PRODUCT RANGE

DESCRIPTIONS  
HYPERLINKS





## ABOUT GULF WESTERN

Headquartered in St. Marys NSW, Gulf Western Oil Company is Australia's largest privately held independent manufacturer of motor oils and industrial lubricants. The company offers premium grade heavy duty oils and lubricants for commercial and Industrial applications. Gulf Western blend using the finest base oils and additives to supply products that are specifically suited to harsh industrial and commercial environments. Along with a host of other products from brake fluids to hand cleaners.

Gulf Western produces private brand products for various oil companies, mass merchandisers, and other private label customers. The company offers its products through its distribution network in Australia and also ships product throughout South East Asia. Australia has embraced the Gulf Western methodology and superior performance. Over the last 29 years we have become a leader in the field and this has been achieved by embracing some of the leading programs in the lubricant market.

- API (American Petroleum Institute)
- ISO 9001 Quality Assurance Management System Certification

Gulf Western prides itself in only using the highest quality base oils and the most technologically advanced API approved additive systems. We hold OEM approvals for most manufacturers in today's market and continually monitor and update our products to suit new technologies.



The role of a lubricant is critical in virtually all types of machinery applications as it influences the reliability, efficiency, and service life of the machinery. As part of the development process, Gulf Western Oil works closely with its customers to evaluate the performance of equipment with different grades of lubricants to determine the best solution that delivers optimum performance, efficiency, drain intervals and service life across the varying conditions experienced by each piece of equipment.

Lubricant evaluation was previously carried out based on experience and intuition. Today's equipment requires a more sophisticated method of product design, development and specification to enable equipment to run more efficiently, longer, and faster. Gulf Western Oil's chemists work closely with a selection of Global Technology Partners to ensure that our range of lubricants and the technology incorporated in these lubricants are tested against the manufacturer's specification, both in the laboratory as well as in field service. Further development can be undertaken locally by our experienced chemists to help meet the specific needs of equipment related to fuel quality, climate or other operating condition.

Gulf Western Oil offers its customers after sales support through provision of used oil analysis services. Testing is performed by an independent third party laboratory which specialises in used oil analysis and offers a prompt sample turn-around and reporting system. This allows Gulf Western Oil and our customers to monitor the health of the equipment in service and monitor the integrity of the oil and its continued protection of the equipment. Gulf Western Oil is also able to offer field service kits which allow oils to be analysed in-situ enabling a near instantaneous result to determine oil change requirements. Utilising such equipment may save operating site down-time and maintenance expense if the oil is still fit for service, or provide critical component protection if it is identified that an oil change is required.

- Full support in interpretation of results from the external laboratory or in-situ testing is available.

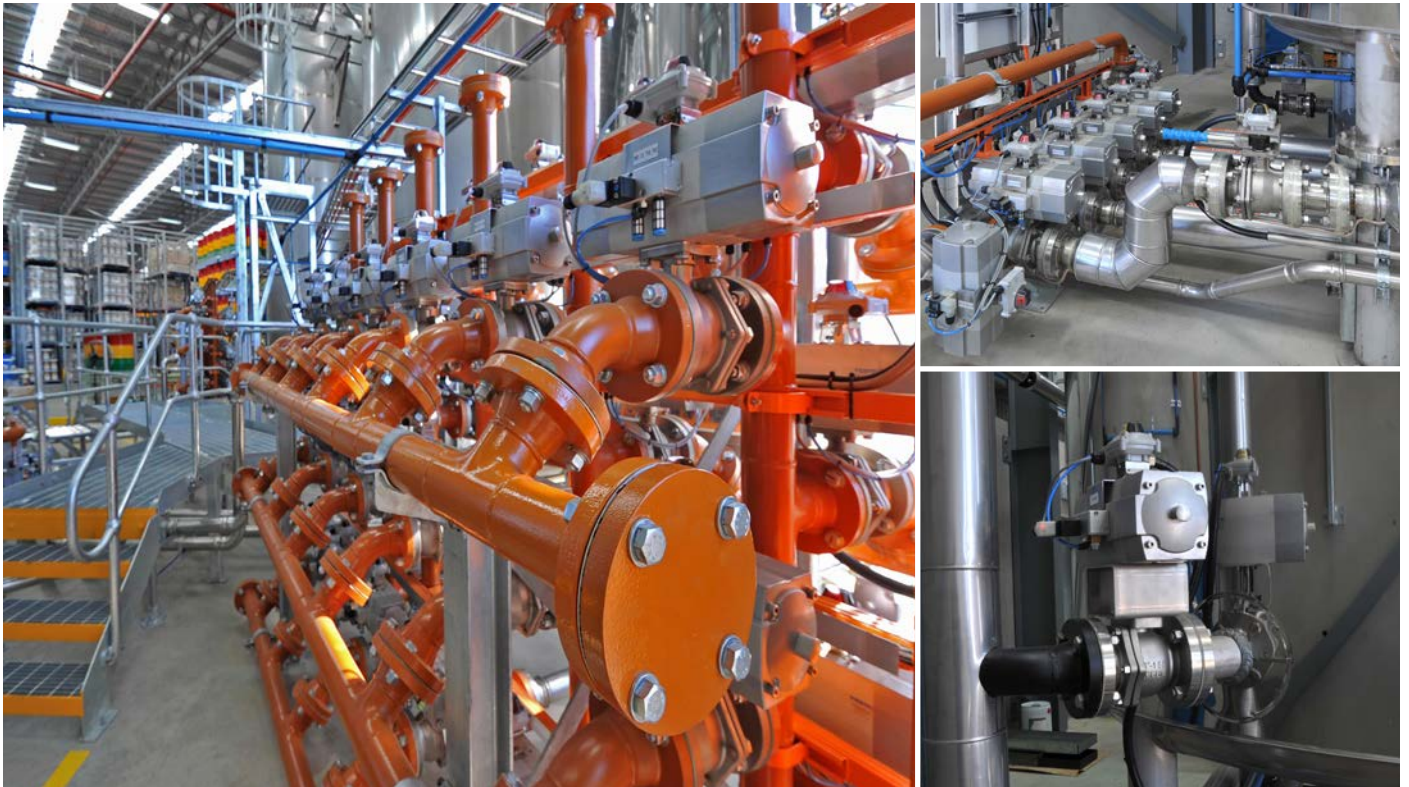


*Senior Chemist - Robert Belic working in Gulf Western's on-site laboratory.  
All blends are tested twice; once in-house and once by NATA approved laboratory*



At Gulf Western Oil we use the highest quality base oils and advanced additive packages to produce lubricants for heavy duty applications in construction, mining, oil and gas and agriculture. We offer products for heavy duty industrial applications such as stationary engines for power generation using diesel, natural gas, landfill gas Waste Coal Mine Gas (WCMG). Gas compression engines, and transformer lubrication, and hydraulic and gear oils. We also offer products to be used in metalworking applications, including cutting oils and coolants.

Using the latest in blending technology and the most advanced ISO-certified facility in the Southern Hemisphere, lubricants are computer-blended to precise specifications and with exceptional consistency. Whether a blend is made to standard or custom specifications, our statistical process controls assure every batch meets rigid blend specifications.



## **CUSTOM BLENDING -**

Using our fully equipped laboratory, our research chemists and lubrication engineers can formulate a product to uniquely address your needs and optimize your equipment productivity and efficiency. Different fuels and environmental conditions can have an impact on efficiency and longevity that can be greatly improved using the correct lubrication. Call us to discuss what we may be able to do for you.



## HEAVY DUTY DIESEL ENGINE OILS

With Gulf Western Oil the technology exists in Australia to blend high-performance engine oils that can withstand the harsh Australian conditions and rigors for heavy duty diesel engines. Gulf Western uses premium quality base oil and best-in-class additive technology to formulate engine oils that maintain their viscosity, keep engine wear to a minimum, and help ensure dependability. Gulf Western engine oils are formulated to meet the needs of our industrial customers and in most cases easily exceed the Automotive Performance Institute (API) specifications for performance.



We have customers all over Australia that use our engine oils and stand by their performance and ability to keep engines protected from wear and running at peak performance. Whether its Diesel Stationary Engines for Power Generation, or Mobile Earth Moving Equipment, Gulf Western can provide oils to suit the application.

# HEAVY DUTY DIESEL ENGINE OILS

Gulf Western provide a high quality product as advanced as any other in todays market, with the added benefits of an Australian manufacturer in price and accessibility.

## MOBILE EQUIPMENT



The unique challenges for earthmovers in the harsh Australian outback require equipment to not only be built to the highest standards, but maintained with robustness and durability. Critical to the maintenance of the equipment is lubrication to keep moving parts moving. Gulf Western Oils and Fluids are developed to meet these conditions. Hydraulics, Engine Oils, Gear Lubes, and Grease play a vital role in keeping your fleet moving and producing.

## MINING



Whether its above ground or underneath it Gulf Western has oils and fluids to meet the challenge. Engine Oils for your Power Generation, Hydraulic fluids and Greases to keep your equipment running efficiently and smoothly.

## OIL AND GAS



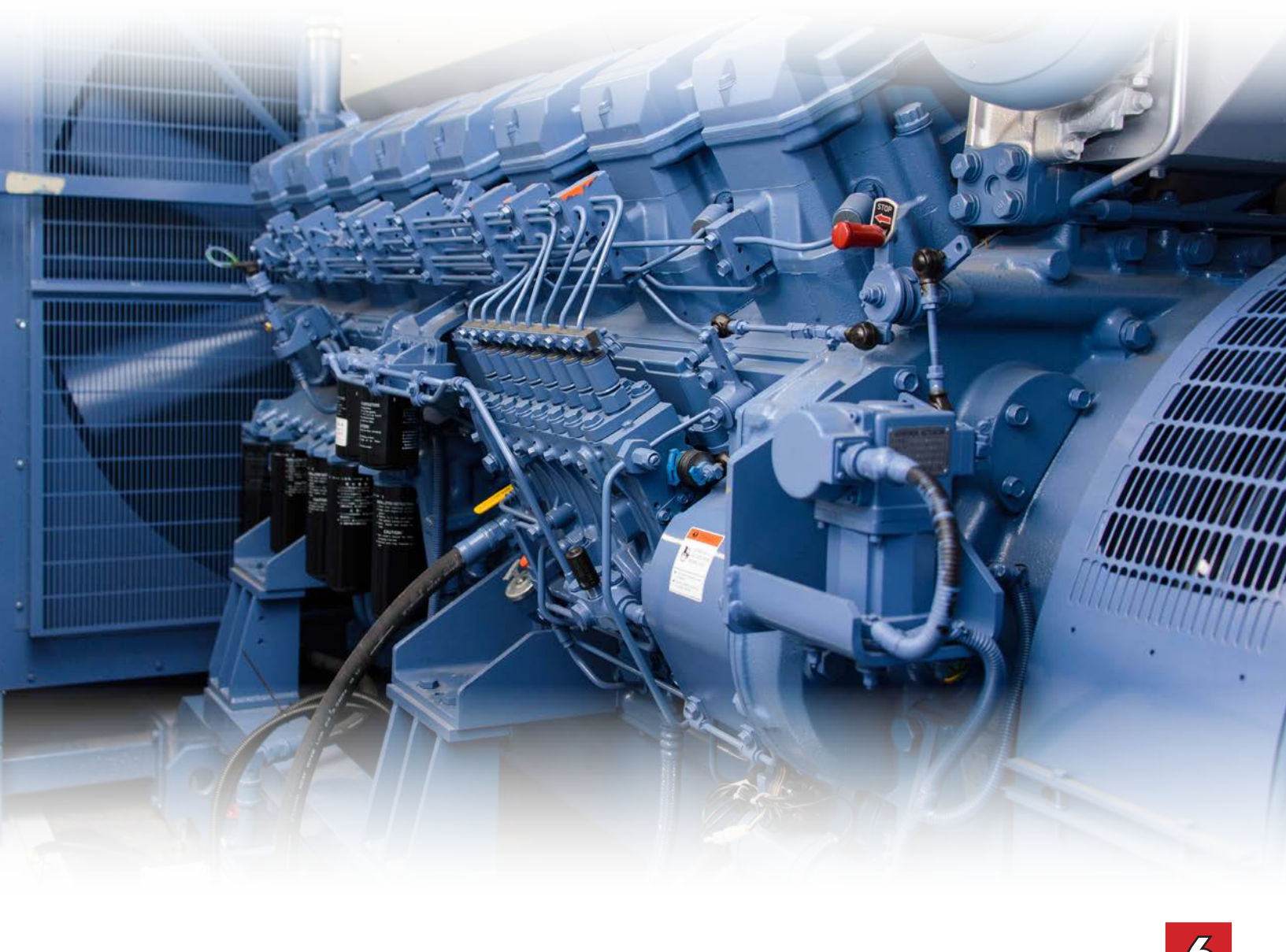
The oil and Gas industry in Australia endures specific challenges to moving equipment as well. Compression systems and Power Generation as well as Pumps and vehicles require the best lubricants to reduce wear, extend maintenance requirements and improve efficiency.



## HEAVY DUTY GAS ENGINE OILS

Gulf Western Top Gas Engine Oil is a Heavy Duty performance lubrication formulated with advanced additive base oils to provide the ultimate in protection for turbocharged, naturally aspirated, medium and high speed, four-cycle stationary gas and landfill gas engines requiring a low ash oil. Specifically formulated for engines used in Power Generation and Gas Compression, the Gulf Western Top Gas low ash, low phosphorous formula provides exceptional anti-wear protection to valve-train components, gears, bearings, pistons and rings while insuring catalytic converter compatibility and longevity.

Even with extended oil drain intervals, This combination provides advanced detergent/dispersant performance and excellent base number retention to ensure ultimate engine cleanliness and reduce sludge and varnish formation. Gulf Western Top Gas maximises oil life resulting in the potential for extended drain intervals, reduction in maintenance and operating costs, less waste oil generation and reduced oil usage. Lower oil volatility to reduce oil consumption and minimize combustion chamber and exhaust system deposits. Gulf Western Top Gas provides enhanced anti-wear protection in a low phosphorous formulation.





## HEAVY DUTY GAS ENGINE OILS

*With the many different types of gas in today's environment, each can have unique and dynamic effects on engine performance. Gulf Western works along with its customers to formulate oils in-house that suit their applications, and ensure the optimum cost effectiveness of the asset.*

### LANDFILL GAS



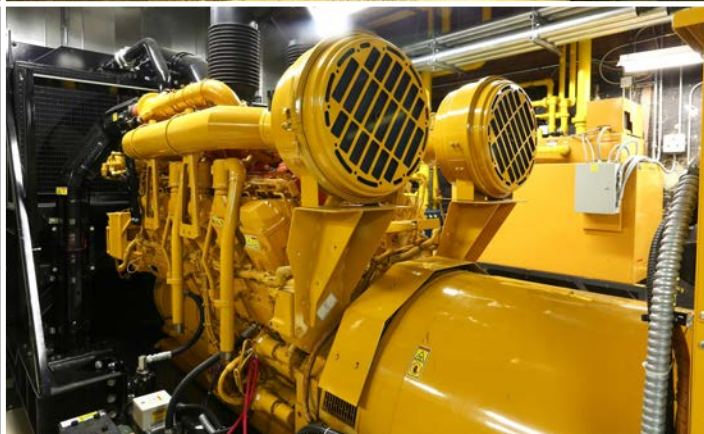
More and more landfill sites are seeing the benefits of generating electricity and heat using the gases available on-site. Gulf Western has formulated solutions to the particular challenges faced by irregular gas and can work with you to optimise the output of your engine.

### NATURAL GAS



In its many forms, and added efficiencies, Natural Gas has become a popular option for stationary engines in Power Generation, Gas Compression, and Water Treatment. Gulf Western has premium oils manufactured here in Australia that will ensure your gas engines are running with the best available technology and Support.

### WASTE COAL MINE GAS



Removing these gases is critical, and using them for power generation is sensible. Gulf Western can provide Engine Oils to suit the particular challenges faced by this unique application with specially blended oils, as well as ongoing monitoring and analysis to ensure your Generators are running with the right lubrication.

### **TOP DOG® INDESTRUCTIBLE**

TOP DOG® Indestructible 15W-40 is an uncompromising, next generation Heavy Duty Diesel Engine Oil containing Indestructible additive technology specifically designed to protect high powered, turbo charged Heavy Duty Diesel Engines. The unique formulation contains performance enhancing and superior wear protection technology that far exceeds the requirements of the new API CK-4 lubricant specification and previous specifications including API CJ-4.

TOP DOG® Indestructible 15W-40 meets the majority of modern engine manufacturer's specifications. It has been designed to significantly exceed the requirements of API CK-4, which is the latest Heavy Duty Diesel Engine Oil classification released in December 2016 by the American Petroleum Institute. Having a low SAPS level, it is suitable for Heavy Duty Diesel Engines fitted with EGR (exhaust gas recirculation) systems and other exhaust after-treatment systems including Diesel Particulate Filters (DPF's) and Selective Catalytic Reduction (SCR)/Adblue.

Being backwards compatible with previous API Heavy Duty Diesel classifications such as API CJ-4, CI-4 and CH-4, TOP DOG® Indestructible 15W-40 meets the requirements of most modern and older style heavy duty diesel engines from the world's leading engine manufacturers. It can be used in stationary engines, earthmoving and road transport applications as well as light commercial diesel vehicles requiring a 15W-40 heavy duty diesel engine oil.

<http://www.gulfwestern.com.au/wp-content/uploads/2017/06/Top-Dog-Indestructible-300021.pdf>

### **TOP DOG GLOBAL™ PLUS**

Top Dog Global™ Plus is a semi-synthetic premium diesel engine oil meeting the latest in lubrication technology. It is formulated with high quality synthetic base oil. It meets the specifications of nearly all modern engine manufacturers and OEM's.

Due to its excellent dispersant properties Top Dog Global™ Plus is ideally suited for Series 60 Detroit Diesel and engines fitted with EGR (Exhaust Gas Recirculation) systems and those fitted with diesel particulate filters (DPF's). Its ideal application is as a true all fleet universal diesel oil. Top Dog Global™ Plus can be used in stationary engines, earth moving and road transport applications as well as light commercial diesel applications and Allison C4 transmissions.

<http://www.gulfwestern.com.au/wp-content/uploads/2015/07/Top-Dog-Global-Plus-30013.pdf>

### **TOP DOG GLOBAL™ MINERAL**

Top Dog Global™ Mineral is a premium diesel engine oil meeting the latest in lubrication technology. It is formulated with high quality group II base oil. It meets the specifications of nearly all modern engine manufacturers and OEMs.

Due to its excellent dispersant properties Top Dog Global™ Mineral is ideally suited for Series 60 Detroit Diesel and engines fitted with EGR (Exhaust Gas Recirculation) systems and those fitted with diesel particulate filters (DPF's). Its ideal application is as a true all fleet universal diesel oil. Top Dog Global™ Mineral can be used in stationary engines, earth moving and road transport applications as well as light commercial diesel applications and Allison C4 transmissions.

<http://www.gulfwestern.com.au/wp-content/uploads/2015/07/Top-Dog-Global-Mineral-30018.pdf>



### **TOP DOG® XDO**

Top Dog® XDO is a premium diesel engine oil meeting the latest in lubrication technology. It holds global approval from Mack Trucks USA and Volvo Sweden. It is recognised as being an official factory fill lubricant.

Top Dog® XDO is ideally suited for mixed fleets including American European and Japanese diesel engines. Top Dog® XDO can be used in stationary engines, heavy duty earth moving and road transport applications as well as light commercial diesel applications and Allison C4 transmissions. It can also be used in late model petrol engines both stationary and in mixed vehicle fleets.

<http://www.gulfwestern.com.au/wp-content/uploads/2015/07/Top-Dog-XDO-15W-40-30012.pdf>

### **SYNFLEET MX**

Synfleet MX is a synthetic ultra premium diesel engine oil meeting the latest in lubrication technology. Synfleet MX utilises the latest specification in diesel additive technology. Synfleet MX is specifically formulated for use in the latest emission engines operating under the most severe conditions including multi trailer and high horsepower applications.

Synfleet MX has been developed to satisfy the increasing demands for extended service intervals when supported by routine oil analysis. The inherent high temperature stability of Synfleet MX enables this oil to provide a level of protection not normally available in non PAO based diesel engine oils.

<http://www.gulfwestern.com.au/wp-content/uploads/2015/07/Synfleet-30014-1.pdf>

### **TOP GAS 600**

TOP GAS 600 is a premium stationary engine oil developed for the most severe applications in a CO-GEN engine with and without ebullient cooling.

<http://www.gulfwestern.com.au/wp-content/uploads/2016/03/Top-Gas-600-30033.pdf>

### **TORQUE OIL 10W**

Torque Oil is a monograde Caterpillar TO-4 performance drive train fluid. The frictional performance of Torque Oil is superior to TO-2 approved fluids. Torque Oil 10W has been designed to extend the life and performance of all Caterpillar transmissions and hydraulic systems as well as those of Komatsu drive trains. Torque Oil 10W also meets the Allison C4 requirements. Torque Oil 10W is also suitable for use in hydraulic systems where a 10W or 15W hydraulic fluid is called for. Suited for some hydrostatic transmissions.

<http://www.gulfwestern.com.au/wp-content/uploads/2015/07/Torque-Oil-10W-30047.pdf>

## **SYN-TORQUE 50**

SYN-TORQUE 50 is a fully synthetic poly alpha olefin based heavy duty transmission/drive train fluid. It is suitable for Fuller Road Ranger transmissions including those fitted with air shift systems. SYN-TORQUE 50 is designed for transmission applications both on and off highway operating under extreme conditions including irregular servicing and high temperatures. SYN-TORQUE 50 is suitable for extended drain intervals, usually at least double that of mineral oils.

<http://www.gulfwestern.com.au/wp-content/uploads/2015/07/Syn-Torque-Oil-30-50-30054-1.pdf>

## **POWERTRAIN FLUID**

Powertrain Fluid 60 is an extreme pressure, heavy duty lubricant recommended for final Caterpillar drives and axles. Gulf Western Powertrain Fluid is available in SAE viscosity grade 60.

<http://www.gulfwestern.com.au/wp-content/uploads/2016/08/Powertrain-Fluid-60005.pdf>

## **INDUSTRIAL GEAR OIL**

INDUSTRIAL GEAR OIL is available in viscosity grades ISO 68, 100, 150, 220, 320, 460, 680 & 800. INDUSTRIAL GEAR OIL is extreme pressure, high load carrying gear oil formulated with Sulfur Phosphorus additive technology. It is suitable for a wide range of Industrial, Agricultural and Commercial applications calling for an EP Gear Oil.

<http://www.gulfwestern.com.au/wp-content/uploads/2015/07/Industrial-Gear-Oil-30098.pdf>

## **ULTRA DRIVE 80W-90**

Gulf Western Ultra Drive is a synthetic fortified SAE 80W-90 manual transmission and final drive lubricant. It is designed for highly loaded applications working in extreme environments such as road trains and heavy duty earthmoving equipment.

<http://www.gulfwestern.com.au/wp-content/uploads/2015/07/UltraDrive-80W-90-30057-1.pdf>

## **GEAR LUBE 80W-90 & 85W-140**

Gulf Western Gear Lube is an extreme pressure, heavy duty lubricant recommended for hypoid or spiral bevel axles, gears and steering boxes of automotive equipment. Gulf Western Gear Lube is available in SAE viscosity grades 80W-90 and 85W-140.

<http://www.gulfwestern.com.au/wp-content/uploads/2015/06/Gear-Lube-80W-90&85W-140-30051.pdf>



### COMPRESSOR SERIES

The Compressor Series is a premium quality mineral, multi purpose range of compressor oils. Formulated for use in rotary vane, reciprocating, axial and screw air compressors. Note: Not suitable for use in compressors producing air for breathing. It is available in ISO Viscosity Grades 46, 68 and 100.

<http://www.gulfwestern.com.au/wp-content/uploads/2015/07/Mineral-Compressor-Series-30085-2.pdf>

### ULTRA CLEAR COMPRESSOR

Ultra Clear Compressor is a premium quality synthetic HVI multi purpose range of compressor oils. Formulated for use in rotary vane, and screw air compressors. Note: Not suitable for use in compressors producing air for breathing. It is available in ISO Viscosity Grades 46 and 68. Higher grades are available on request.

<http://www.gulfwestern.com.au/wp-content/uploads/2015/07/Ultra-Clear-Compressor-Series-30079.pdf>

### SUPERDRAULIC RANGE

Superdraulic® is a range of high performance anti wear hydraulic oils. They have been formulated using highly refined base oils fortified with zinc anti wear, oxidation corrosion inhibitors and anti foam additives. This produces a highly thermally stable fluid capable of handling high loads and high temperatures. The Superdraulic® range is available in ISO grades 22, 32, 46, 68, 100, 150 and 220.

*Compatibility:* Superdraulic® is compatible with most pumps, valves, and seal materials. However, like all hydraulic oils containing zinc anti wear additives, it is not suitable for use with pumps having silver plated parts (e.g. some Lucas units).

<http://www.gulfwestern.com.au/wp-content/uploads/2015/07/Superdraulic-22324668100150220-30078.pdf>

### SUPERDRAULIC® HI TEMP

Superdraulic® Hi Temp is a range of premium grade, high viscosity index, anti-wear hydraulic oils. They have been formulated specifically for use in hydraulic power or control systems (mobile or stationary) that are subject to extremes of temperature, or are particularly sensitive to changes in temperature.

Superdraulic® Hi Temp may be used in temperature extremes such as: fork lifts in brick kilns or cold stores, hydraulic drives operating in the extremes of the Australian desert and machine tools where viscosity must remain constant. The Supertemp range is available in ISO grades - 46, 68 and 100.

*Compatibility:* Superdraulic® Hi Temp is compatible with most pumps, valves, and seal materials. However, like all hydraulic oils containing zinc anti wear additives, it is not suitable for use with pumps having silver plated parts (e.g. some Lucas units).

<http://www.gulfwestern.com.au/wp-content/uploads/2015/07/Superdraulic-Hi-Temp-Range.pdf>

### **ALL FLEET HDD COOLANT**

All Fleet HDD Coolant is a luminescent green coloured, superior, fully formulated Hybrid technology engine coolant. This Hybrid technology coolant has the advantage of being more robust than both conventional and organic acid technology (OAT) engine coolants. This low silicate, phosphate and amine free product is recommended for use in automotive (aluminium compatible), light duty and heavyduty diesel applications namely onroad truck, offroad, farm and marine. It provides excellent high temperature aluminium protection.

It does not require an initial charge of supplemental coolant additives (SCAs) upon initial fill in heavy duty diesel applications as the product is specially formulated to protect heavy duty diesel wet sleeve liners. SCA addition is application dependant and should only be added as and when required by the vehicle's OEM. This coolant is compatible with coolant filters and heavy duty diesel SCAs and coolant extenders.

<http://www.gulfwestern.com.au/wp-content/uploads/2015/07/All-Fleet-Heavy-Duty-Diesel-Coolant-40055.pdf>

### **LONG LIFE ORGANIC COOLANT**

A premium quality, organic, long life anti-boil/anti-freeze coolant concentrate, based on carboxylate technology and contains no silicates, borates, phosphates, nitrites, nitrates or amines. Suitable for both automotive and heavy duty diesel engines.

Contains 90% monoethylene glycol and a double inhibitor package ensuring ultimate corrosion protection and extended service life. Anti-boil and anti-freeze protection is equally afforded with a substantially higher rust and corrosion protection than competitor products. Long Life Organic Concentrated Coolant is the ultimate in up to date coolant technology.

Protects all metals found in cooling systems and gives excellent protection against cavitation's erosion and wet-sleeve liner pitting. It significantly increases the operating life of water pumps and exceeds corrosion performance levels required to meet Australian Standard AS2108.1-2004 and numerous performance specifications of OEM's including Ford and GMH. This coolant has been independently verified to all relevant ASTM's for automotive and heavy duty diesel use.

Provides maximum protection against 'hot spot' corrosion, common in aluminium cylinder heads. Service life of up to 5 years / 500,000kms\* in automotive applications and up to 6 years / 600,000kms / 6,000 hours\* in heavy duty diesels. This has obvious environmental advantages as a result of fewer coolant changes. There are no deleterious effects on hoses or gaskets (\* at 50/50 dilution ratio).Has a proven record over many years with marine engines, mining equipment, taxi fleets, government departments, bus companies and several large fleet truck companies.

<http://www.gulfwestern.com.au/wp-content/uploads/2016/03/Long-Life-Organic-Concentrated-Coolant-40056.pdf>



### **BLACK TAK MOLYPEX**

Black Tak Molyplex is specifically developed to provide superior heavy duty industrial performance across a wide range of equipment. It is an extreme pressure, molybdenum grease that provides boundary protection from shock and wear under load, resists water washout and provides extended lubrication intervals.

It is a lithium complex grease, blended from selected basestocks incorporating high extreme pressure, water resistant additives, molybdenum disulphide plus oxidation, corrosion and wear inhibitors.

<http://www.gulfwestern.com.au/wp-content/uploads/2015/07/Black-Tak-Molyplex-40052.pdf>

### **TRUCK AND FARM GREASE**

Gulf Western Truck & Farm Grease is a very high quality extreme duty application tacky lithium complex grease. It is suited to nearly all heavy duty greasing applications for agriculture, trucking, automotive, marine, industrial and earthmoving applications. It is formulated with a high base oil viscosity that offers excellent water washout and weld load properties. It is formulated from a combination of polybutene base stocks combined with lithium complex thickener, extreme pressure additives and effective rust, oxidation and corrosion inhibitors.

Truck & Farm Grease resists water washout and "squeeze out" from surfaces requiring lubrication under load conditions. It has been specially formulated to include a shear stable tackiness agent which unlike other conventional lithium complex greases have this extra tenacity for stayput lubrication because of this added adhesive characteristic.

<http://www.gulfwestern.com.au/wp-content/uploads/2015/07/Truck-and-Farm-Grease-60054.pdf>

### **ROCK DRILL OIL**

Rock Drill Oils are specially formulated for the lubrication of percussion type air tools. They have good EP properties, provide good rust protection, are non corrosive to air tool parts and resist water washing. They are available in ISO viscosity grades 100, 150, 220, 320 and 460 to provide the correct choice for most operating or climatic conditions in Australia.

<http://www.gulfwestern.com.au/wp-content/uploads/2017/08/Rock-Drill-Oil-30049.pdf>

### **CLEARONOX (ADBLUE)**

Gulf Western Clearonox is a 32.5% solution of high purity urea in demineralised water, also known as AdBlue®. The product reduces exhaust emission levels of nitrogen oxide products (NOx) from diesel engines. Clearonox is Australian manufactured and meets or exceeds the ISO 22241 international standard. Gulf Western Diesel Clearonox can be used in all Selective Catalytic Reduction (SCR) engines.

<http://www.gulfwestern.com.au/wp-content/uploads/2017/08/Clearonox-40078.pdf>

### **DEGREASER**

A powerful, water soluble solvent based degreaser that will remove grease, oil, grime, dirt and scum. It is suitable for cleaning engines, parts and all other types of off road equipment.

<http://www.gulfwestern.com.au/wp-content/uploads/2015/07/Solvent-Based-Degreaser-40008.pdf>

### **BRAKE CLEANER**

Removes brake fluid, oil and other contaminants from brake drums, linings and pads.

[http://www.gulfwestern.com.au/wp-content/uploads/2016/01/Brake-Cleaner\\_20lt-42213.pdf](http://www.gulfwestern.com.au/wp-content/uploads/2016/01/Brake-Cleaner_20lt-42213.pdf)

### **GREEN KLEEN HAND CLEANER**

A high quality petroleum based hand cleaner. Removes dirt, grease, ink, oil and general grime from the skin.

<http://www.gulfwestern.com.au/wp-content/uploads/2015/07/Green-Kleen-Hand-Cleaner-42012.pdf>



*Gulf Western Oil have an extensive range of products to suit all applications and conditions.  
For further product information - please visit [www.gulfwestern.com.au](http://www.gulfwestern.com.au)*





**- ST MARYS, SYDNEY (HEAD OFFICE) -**

92 Links Road, St Marys, NSW 2760 Australia  
PO Box 515, Kingswood NSW 2747 Australia

**Freecall:** 1800 248 919

**Phone:** 02 9673 9600

**Fax:** 02 9623 6466

**Email:** sales@gulfwestern.com.au

**- CROYDON, VICTORIA -**

11 Lacey Street, Croydon, VIC 3136 Australia

**Freecall:** 1800 248 919

**Phone:** 03 9725 6006

**- SHEPPARTON, VICTORIA -**

68 Mitchell Street, Shepparton, VIC 3630 Australia

**Freecall:** 1800 248 919

**Phone:** 03 5831 3121

**- CLONTARF, QUEENSLAND -**

6 Commerce Court, Clontarf, QLD 4019 Australia

**Freecall:** 1800 248 919

**Phone:** 07 3284 1687